

Non-electric – WHY COMPROMISE

Petrol, diesel and other non-electric driven pressure washers



**Nilfisk
ALTO**

Why Compromise



High level performance and robustness - independent of electricity

Nilfisk-ALTO is not only well known for efficient and innovative electrical powered pressure washers. The Nilfisk-ALTO offering is also completed by a wide range of petrol and diesel driven units – both hot and cold water – ideal for customers in the construction, rental, industrial or agricultural segments.

The independence of petrol and diesel powered motors from any electrical source is combined with typical Nilfisk-ALTO robustness and durability in order to provide long lasting and efficient cleaning solutions for a wide range of applications.

The range covers motor sizes from 5 to 27 HP depending on the models! Performances span from 120 to 240 bar and from 650 to 1450 l/h – that means bad news for even the most incrustated dirt!”

Why compromise



POSEIDON PE / DE

- powerful and flexible



POSEIDON PE / DE

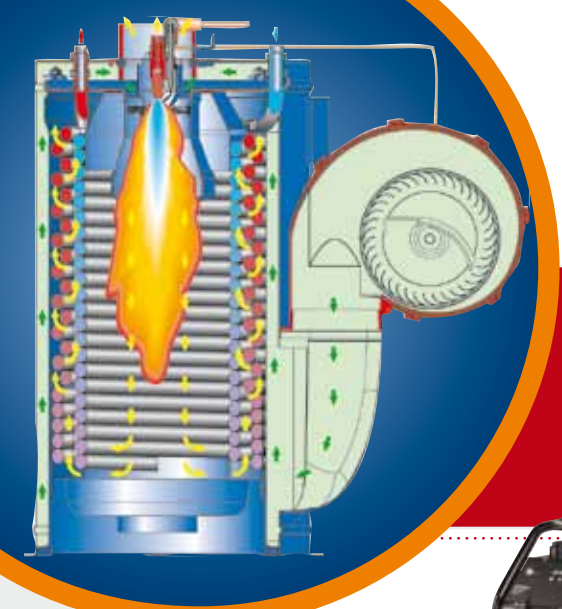
- Robust long life pumps with ceramic pistons.
- Robust design.
- Honda motor on petrol versions.
- Yanmar L100AE motor on diesel version.
- Wide range of models for all applications.
- Ergo accessory concept.
- Thermal dump valve on PE models.
- Automatic throttle control on PE models >9 HP.
- Hose reel with 10 m hose and 2 lances on XT models.
- POSEIDON 5-54 DE with electrical start/stop.



TECHNICAL DATA	POSEIDON 2-31 PE	POSEIDON 2-31 PE XT	POSEIDON 3-36 PE	POSEIDON 5-47 PE	POSEIDON 5-47 PE XT	POSEIDON 5-53 PE	POSEIDON 5-67 PE	POSEIDON 5-67 PE XT	POSEIDON 5-54 DE
Pump pressure (bar/MPa)	140/14	140/14	140/14	190/19	190/19	200/20	230/23	230/23	195/19.5
Cleaning impact (kg/force)	3.1	3.1	3.6	4.7	4.7	5.3	6.7	6.7	5.4
Water flow Q _{max} /Q _{IEC} (l/h)	700/650	700/650	840/750	900/840	900/840	1030/930	1150/1100	1150/1100	1000/950
Max. inlet temperature (°C)	60	60	60	60	60	60	70	70	70
Pistons/number of pistons	Ceramic/3	Ceramic/3	Ceramic/3	Ceramic/3	Ceramic/3	Ceramic/3	Ceramic/3	Ceramic/3	Ceramic/3
Automatic throttle control				●	●	●	●	●	●
Pump (RPM)	3400	3400	3400	3400	3400	3400	1550	1550	1500
Fuel	Petrol	Petrol	Petrol	Petrol	Petrol	Petrol	Petrol	Petrol	Diesel
Dimensions L x W x H (mm)	800 x 565 x 1010	800 x 565 x 1010	800 x 565 x 1010	800 x 565 x 1010	800 x 565 x 1010	800 x 565 x 1010	800 x 565 x 1010	800 x 565 x 1010	1000 x 615 x 1150
Weight (kg)	35	35	38	53	53	60	68	68	110
Fuel consumption (l/h)	3.7	3.7	4.1	6.7	6.7	8.2	9.7	9.7	7.5
Motor power (HP)	5	5	5.5	9	9	11	13	13	10
Motor type	HONDA GC 160	HONDA GC 160	HONDA GX 160	HONDA GX 270	HONDA GX 270	HONDA GX 340	HONDA GX 390	HONDA GX 390	YANMAR L 100 AE
Suction height dry/wet (m)	0.5 - 1.5	0.5 - 1.5	1.0 - 1.5	1.0 - 1.5	1.0 - 1.5	0.0 - 0.5	0.5 - 1.0	0.5 - 1.0	0.5 - 1.0
Nozzle size	0400	0400	0500	0450	0450	0500	0550	0550	0530
STANDARD EQUIPMENT									
HP Hose (DN8, 10 m)	1405569	1405569	1405569	1405569	1405569	1405569	1405569	1405569	1405569
Hose reel with 10 m hose		●			●			●	
Ergo 2000 gun	106403122	106403122	106403122	106403122	106403122	106403122	106403122	106403122	106403122
Ergo coupling	101119496	101119496	101119496	101119496	101119496	101119496	101119496	101119496	101119496
Water inlet coupling	32541*	32541*	61369**	61369**	61369**	61369**	61369**	61369**	61369**
FlexoPower Plus lance without HP nozzle	106402281	106402281	106402281	106402281	106402281	106402281			
TurboHammer Plus lance with HP nozzle		106403002			106402290			106402292	
Tornado Plus lance without HP nozzle							106403010	106403010	106403010
Tornado Plus nozzle	101119738	101119738	101119741	101119740	101119740	101119741	101119743	101119743	101119742
ITEM NO.	106174730	106174741	106174731	106174732	106174742	106174733	106174734	106174743	106174740

* Gardena coupling

** Universal brass coupling



NEPTUNE PE / DE

- Power, robustness and cost effective cleaning



All NEPTUNE PE and DE models are equipped with the innovative and efficient EcoPower boiler system, already well known from the electrical powered range. The boiler ensures efficiency rates > 92% which mean reduced fuel consumption and lower fuel costs. At the same time, the high boiler power ensures quick heating of the water to highest temperatures.



NEPTUNE PE / DE

- Powerful heating system.
- Full ceramic piston pump.
- Easy access to el box.
- Double lance holder.
- Forklift truck.
- Robust steel chassis and frame.
- Electrical starting system for easy start-up with no strain.
- EcoPower boiler with > 92% efficiency.
- Slow running pump.
- Low pump oil safety.
- Flame sensor and exhaust gas temperature.
- High pump temperature cut (except NEPTUNE 5-51 DE).
- Thermal dump valve on NEPTUNE 5-51 DE.
- Anti-Calc/water brake tank as option.

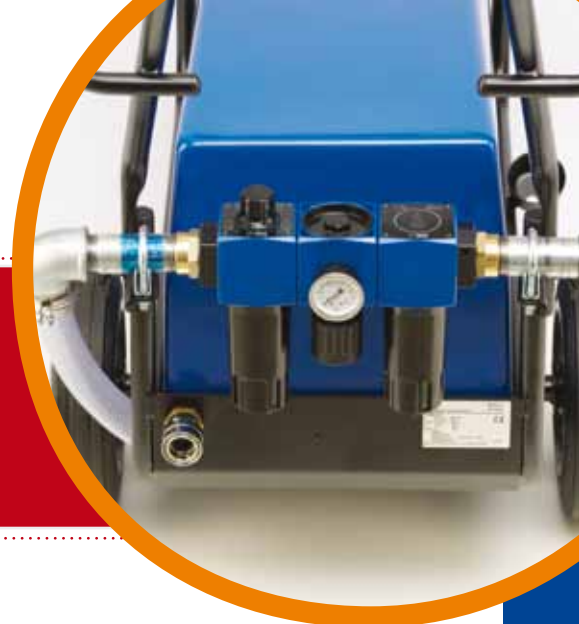


The NEPTUNE PE/DE models use long lasting and reliable pump technologies including the 4 ceramic piston C3 pump – ideal for heavy duty use. All pumps are either driven by a gear reduction or by belt in order to ensure low speed and long life.

TECHNICAL DATA	NEPTUNE 5-46 PE	NEPTUNE 5-54 PE	NEPTUNE 5-85 PE	NEPTUNE 7-61 PE	NEPTUNE 5-51 DE	NEPTUNE 7-66 DE	NEPTUNE 7-72 DE
Pump pressure (bar/MPa)	200/20	220/22	240/24	220/22	200/20	200/20	200/20
Cleaning impact (kg/force)	4.6	5.4	8.5	6.1	5.1	6.6	7.2
Water flow Q _{max} /Q _{IEC} (l/h)	860/800	1000/900	1450/1350	1120/1010	1000/900	1200/1150	1300/1200
Max. inlet temperature (°C)	40	40	40	40	40	40	40
Pistons/number of pistons	Ceramic/3	Ceramic/3	Ceramic/3	Ceramic/4	Ceramic/3	Ceramic/4	Ceramic/4
Motor / Pump (RPM)	3400/1450	3400/1450	3400/xx	3400/1450	3400/xx	3400/1450	3400/1450
Water temperature (water/steam) (°C)	90/150	90/150	90/150	90/150	90/150	90/150	90/150
Fuel consumption, ΔT=45°C (kg/h)	3.5	3.9	5.8	4.6	3.9	5.0	5.2
Fuel type	Petrol	Petrol	Petrol	Petrol	Diesel	Diesel	Diesel
Onboard fuel tank for boiler (l)	57	57	57	57	57	57	57
Onboard fuel tank for motor (l)	6.1	6.1	25	6.1	5.5	4	Same as for boiler
Motor type	Honda GX 340	Honda GX 340	Honda GX 630	Honda GX 340	Yanmar	Ruggerini	Mitsubishi
Motor power (HP)	11	13	24	13	10	16	27
Dimensions L x W x H (mm)	970 x 780 x 1000	970 x 780 x 1000	1100 x 910 x 1000	970 x 780 x 1000	970 x 780 x 1000	1100 x 910 x 1000	1100 x 910 x 1000
Weight (kg)	208	208	260	210	220	315	510
Wheels	●				●		
Nozzle size	0400	0450	0500	0650	0450	0640	0640
STANDARD EQUIPMENT							
HP Hose (DN8/DN10)	301001100 [15 m]	301001100 [15 m]	1402064 [DN10 x 15 m]	1402064 [DN10 x 15 m]	301001100 [15 m]	1402064 [DN10 x 15 m]	1402064 [DN10 x 15 m]
Ergo 2000 gun	106403122	106403122	106403122	106403122	106403122	106403122	106403122
Ergo coupling	101119496	101119496	101119496	101119496	101119496	101119496	101119496
Water inlet coupling*	61369	61369	61369	61369	61369	61369	61369
Tornado Plus lance without HP nozzle	106403010	106403010	106403010	106403010	106403010	106403010	106403010
Tornado Plus nozzle	101119738	101119740	101119746	101119741	101119740	101119745	101119745
ITEM NO.	106239510	106239515	106239560	106239540	106239610	106239630	106239635

KOS / KLU

- fluid and air driven



KOS / KLU

- 4 stainless steel pistons.
- 03 pump unit.
- 1450 RPM motor.
- KLU is pneumatically driven.
- KOS is hydraulically driven (oil driven).

The KOS and KLU have been sold for use onboard ships and oil platforms, on road construction machineries, on oil spill cleanup boats, in lorries and for use on tractors. Pneumatic and hydraulic powered pressure washers are ideal for potentially dangerous zones where diesel or electrical power is not recommended



TECHNICAL DATA	2603 KLU	4403 KOS
Pump pressure (bar/MPa)	120/12	160/16
Cleaning impact (kg/force)	3.9	5.9
Water flow Q _{max} /Q _{IEC} (l/h)	950/880	1150/1040
Max. inlet temperature (°C)	40	65
Pistons/number of pistons	Stainless/4	Stainless/4
Pump (RPM)	1450	1450
Power source, air driven	290 m³/h	
Power source, hydraulically driven		42.7 l/min. at 95-200 bar
Dimensions L x W x H (mm)	1000 x 545 x 825	530 x 319 x 450
Weight (kg)	70	44
Nozzle size	0640	0640
STANDARD EQUIPMENT		
HP Hose (DN10, 10 m)	6101766	6101766
Ergo 2000 gun	106403122	106403122
Ergo coupling	106402075	106402075
Water inlet coupling*	1602945	1602945
Tornado Plus lance without HP nozzle	106403010	106403010
Tornado Plus nozzle	101119745	101119745
ITEM NO.	6170000	6170330

* NITO coupling



ACCESSORIES

The accessories, the application, the solutions, the flexibility

The Ergo System optimises ergonomics, user-friendliness and adaptability of the pressure washer for professional users.

Intensive use of a pressure washer can be tiring for hands, arms and shoulders. So the parts of the pressure washer handled most - the spray gun, lance and couplings, were studied and engineered to reduce operator fatigue and thereby increase operating efficiency.

Various accessories and attachments can be used to optimise the pressure washer for a specific cleaning task... and with the Ergo system described on the next page, it is possible to change accessories in seconds, of course without tools.

1: Simple Short Lance & Short Double Lance

These lances allow you to control the water flow and pressure when working close to the dirt.



2: Water Sandblaster

These accessories makes it easy to remove rust, scale and even concrete build-up from surfaces. It can also be used for cleaning or to prepare for painting.



3: Armex Softblasting

The Armex Softblasting kit makes it easy to remove paint, such as graffiti, without damaging the surface. It can also be applied when cleaning smoke damage or other dirt before repainting walls.



4: PowerScrub

The PowerScrub is an easy and fast way to clean small or large horizontal or vertical surfaces. Available in 30 cm, 40 cm or 50 cm diameter.



5: Rotary Brush

The Rotary Brush is driven by the water of your pressure washer, which includes a control for rotation speed and control for pressure and detergent (if an external injector is used). This brush is ideal for cleaning bodywork, windows, etc.



6: Washing Brush

This brush is ideal for washing trucks, buses and camping trailers. It also includes control for detergent (if an external injector is used).





- 1) Ergo 2000 spray gun
 - Unique, ergonomic design
 - Low activation and holding forces
 - Reduced working strain
 - Accessory quick coupling system
 - VarioPress version available (is shown on picture)
- 2) Ergo 3000 spray gun
 - Low activation and holding force on trigger
 - 360° flexo swivel for hose with locking device adding comfort in any working position
 - Swivel couplings on hose avoid hose drilling
 - Quick bayonet coupling system for easy connection of accessories
 - VarioPress version available (is shown on picture)
- 3) Tornado Plus nozzle
 - Patented nozzle construction
 - 75% more efficient through high level of water concentration
- 4) Ergo 3000 high pressure couplings
 - Quick and easy connection of hose and machine
 - Protective cover shield against heat transfer
 - Security against hose removal when hose is under pressure
- 5) Universal Plus lance
 - Lightweight and simple high pressure lance
 - Stainless steel piping
 - Ergonomic casing for optimal holding positions
 - Available in different versions; curved and straight
- 6) FlexoPower Plus lance
 - Lightweight and simple lance
 - Pressure regulation at nozzle head allowing work with low pressure detergent and rinsing
 - Stainless steel piping
 - Ergonomic casing for optimal holding positions
 - Available in different lengths
- 7) Tornado Plus lance
 - Robust stainless steel double pipe lance
 - Pressure regulation at lance
 - Separate low pressure nozzle with optimal rinsing effect that gives possibility for using low pressure detergent
 - Available in different lengths
- 8) Sidebar
 - Optional accessory for additional comfort in working posture
 - Soft grip - Flexible solution: Adaptable to left or right handed use, long or short reaches

ErgoSystem
Applied Ergonomics

Non-Electric driven high pressure washers = Independency, flexibility and power



For tough use where you have no electric power (e.g. on construction sites, agriculture...)

Nilfisk-ALTO presents a comprehensive range of diesel, and petrol driven mobile pressure washers for professional use. A great combination of high functionality and maximum convenience, technical perfection and a robust design. The ideal solutions for all your cleaning jobs – custom-tailored, efficient, economical.

Petrol and diesel powered pressure washers offer the big advantage of being totally independent of usual electrical power sources – and even of normal water networks. They thus offer a great flexibility of use. Being powered by a petrol or diesel run motor, and being able to suck water from a tank, a river or a well, they represent an ideal solution for cleaning agricultural or construction material in the middle of a field or on a building site. Nilfisk-ALTO offers a full range of performances and motor sizes making us the ideal partner for the rental business in all of its forms.

The impressive performance range of the product family is defined by water flow rates between 700 and 1450 l/h and operating pressures from 140 to 240 bar. That is bad news even for the worst of dirt, and convincing cleaning results are ensured with any application. Pumps and motors are absolutely reliable and durable: The pumps have a long working life and low service costs and the Auto Start/Stop limits wear on both motor and pump.

Powerful Cleaning

The wide range of performances ensure that whatever the application, you will find a power-ful Nilfisk-ALTO product to help you solve the cleaning task quickly and efficiently.

Flexible Cleaning

All models include pressure-flow regulation at the pump and also detergent injection systems, ideal for solving a wide range of different cleaning tasks.

Ergonomic use

The Ergo accessory concept all ensure that the cleaning job is done with the lowest level of effort and stress.

Quick and easy cleaning is our business.



The Nilfisk-ALTO brand is owned by Nilfisk-Advance A/S, one of the leading professional cleaning equipment companies in the world, with a turn-over of Euro 789 million and 4,900 employees.

Our headquarters is in Denmark and we have sales companies in all main European countries, North America and Asia. Our manufacturing facilities are in Hungary, China, Italy, the USA, Singapore, Denmark and Germany.

We supply quality high pressure washers, vacuum cleaners and floor care equipment to agriculture, automotive and industrial companies, cleaning contractors and private consumers.

With the Nilfisk-ALTO brand we focus on innovation and growth. We believe in developing and maintaining long lasting relationships with our customers, suppliers and employees.

No claims can be made on the basis of information or illustrations contained in this catalogue. Subject to alteration of technical data, design and equipment.

Distributed by:

Nilfisk-ALTO
www.nilfisk-alto.com

**Nilfisk
ALTO**
Why Compromise